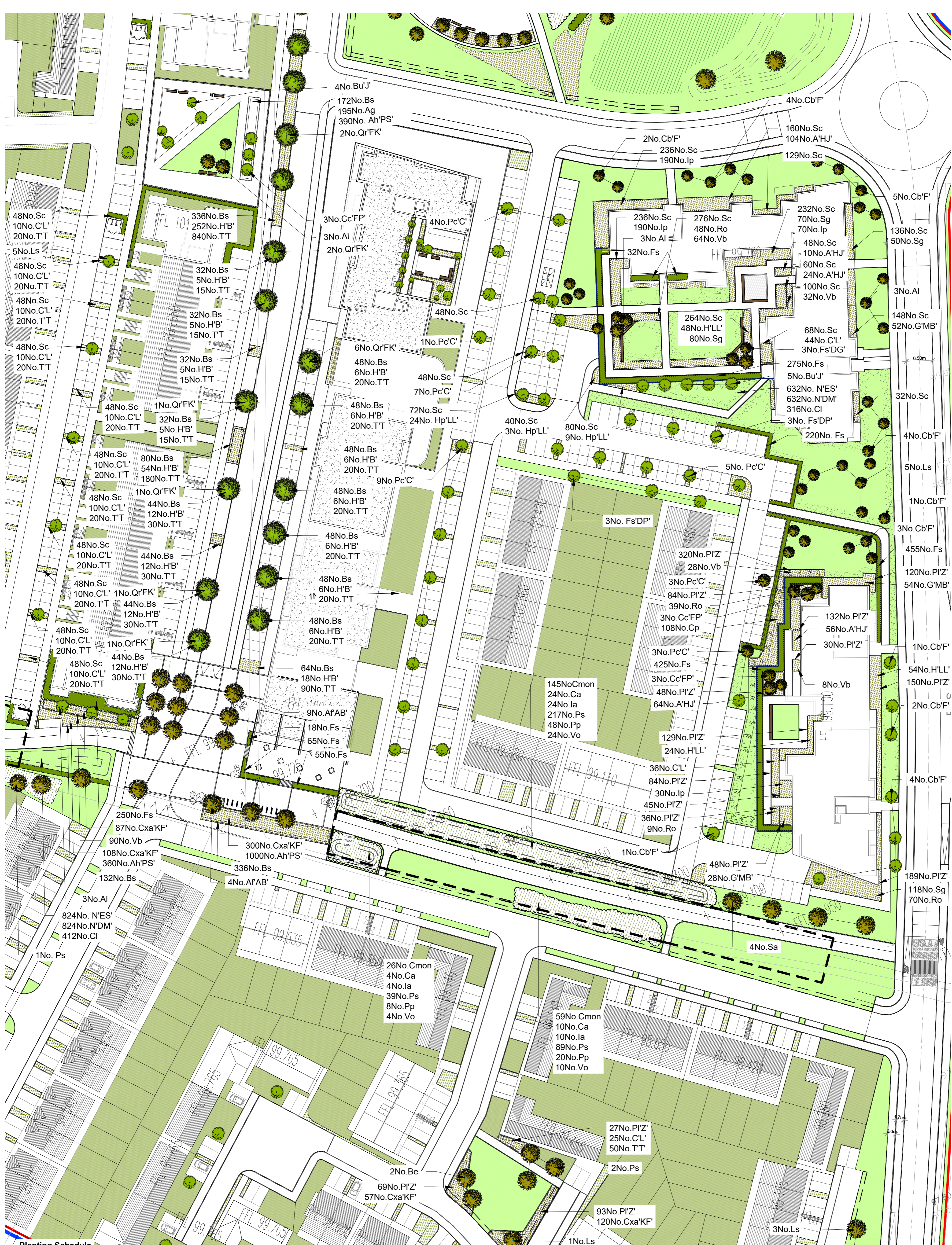


Note

Legend

- Site Boundary
- Proposed Amenity grass areas with public ownership and to public open space: grass seed sown on 150mm clean topsoil (imported if necessary), over 250mm subsoil, all subsoil to be punctured and consolidated to aid natural drainage.
- Grass areas within private ownership.
- Proposed shrub planting areas within public open space, positioned within 450mm clean topsoil (imported if necessary) to areas shown.
- Proposed compensatory woodland and Native Infill hedgerow to areas shown.
- Existing Hedgerow to be retained or infilled as necessary with similar species where possible (i.e. under the applicants ownership).
- Proposed meadow area.
- Proposed hedgerow to areas shown.
- Proposed open space tree planting - specimen species.
- Proposed tree planting.
- Existing Tree planting to be retained.
- Stormtech Attenuation System and extent of swale areas. Refer to Engineers Drawing for details.



Planting Schedule

Abbrev.	Botanical Name	Grth/ Dia. cm	Height cm	Root Zone	Specification	Qty
AFAB	Acer freemanii 'Autumn Blaze'	30-40		RB	3x; EHS; clear stem min. 220cm	13
AI	Amygdalius lamarkii	14-16		RB		12
Be	Betula ermanii	16-18	400-450	RB	3x; EHS; clear stem min. 200cm	2
BuJ	Betula utilis 'Jacquemontii'	18-20		RB	3x; EHS; clear stem min. 200cm	9
CcFP	Cercis canadensis 'Forest Pansey'	14-16				9
CbF	Carpinus betulus 'Fastigiata'	18-20	400-450	RB	3x; EHS; clear stem min. 200cm	27
FsDG	Fagus sylvatica 'Dawnyck's Gold'	16-18	350-450	RB	3x; EHS; clear stem min. 200cm	3
FsDP	Fagus sylvatica 'Dawnyck's Purple'	16-18	350-450	RB	3x; EHS; clear stem min. 200cm	6
Ls	Liquidambar styraciflua	18-20	400-450	RB	3x; EHS; clear stem min. 200cm	19
PcC	Pyrus calleryana 'Chanticleer'	20-25	450-500	RB	3x; EHS; clear stem min. 200cm	32
Ps	Pinus sylvestris	150-200		RB		3
QrFK	Quercus robur 'Fastigate Koster'	18-20	450-500	RB	3x; EHS; clear stem min. 200cm	14
Sa	Sorbus aucuparia	16-18	400-450	RB	3x; EHS; clear stem min. 200cm	4
<b>Total</b>						<b>153</b>

Abbrev.	Name	Height cm	Root Type	Specification	Mx %	Qty
Omon	Crataegus monogyna	90-120	BR	Transplant - seed raised, to be retained at a height of circa 120cm	30	230
Ca	Corylus avellana	90-120	BR	Transplant - seed raised, to be retained at a height of circa 120cm	5	38
la	Ilex aquifolium	90-120	BR	Transplant - seed raised, to be retained at a height of circa 120cm	5	38
Ps	Prunus spinosa	90-120	BR	Transplant - seed raised, to be retained at a height of circa 120cm	45	345
Pp	Salix cinerea	90-120	BR	Transplant - seed raised, to be retained at a height of circa 120cm	10	76
Vo	Viburnum opulus	90-120	BR	Transplant - seed raised, to be retained at a height of circa 120cm	5	38
<b>Total</b>						<b>765</b>

Abbrev.	Name	Specification	No./m	%	Qty
NES	Narcissus 'Early Sensation'	Loose Bulbs	20	40	656
NDM	Narcissus 'Dutch Master'	Loose Bulbs	20	40	656
Cl	Camassia leichtlinii	Loose Bulbs	20	20	328
AHPS	Allium hollandicum 'Purple Sensation'	Loose Bulbs	20		850
TT	Tulipa 'Triumphator'	Loose Bulbs			1700
<b>Total</b>					<b>4190</b>

Abbrev.	Name	Height cm	Root Type	Specification	No./m	Qty
Fs	Fagus sylvatica	90-120	BR	1+1; Transplant - seed raised; branched 3 brks, planted in a double staggered row @ 400mm centres	5	1795
<b>Total</b>						<b>1795</b>

Abbrev.	Botanical Name	Grth/ Dia. cm	Height cm	Root Zone	Specification	No./m <sup>2</sup>	Qty
Ag	Agapanthus 'Bressingham White'			3L	Full pot	5	195
A'HJ	Anemone 'Honorable Jobert'			2L	Full pot	4	258
Bs	Buxus sempervirens			2L	Full pot	4	2288
Cxa'KF	Calamagrostis x acutiflora 'Karl Foerster'			2L	Full pot	4	672
CL	Crococoma 'Lucifer'			1.5-2L	Full pot	5	105
Op	Carex pendula			2L	Full pot	3	108
GMB	Geum chilonense 'Mrs Bradshaw'			2L	Full pot	4	134
HB	Hydrangea 'Bobo'			2L	Full pot	3	500
HLL	Hydrangea paniculata 'Lime Light'			2L	Bushy; 4 brks	3	162
lp	Iris pseudoacorus			2L	Full pot	5	480
PIZ	Prunus laurocerasus 'Zabeliana'			2L	Full pot	3	1504
Ro	Rosmarinus officinalis			2L	Full pot	3	96
Sc	Sarcococca confusa			2L	Full pot	4	2401
Sg	Stipa gigantea			2L	Full pot	3	318
Vb	Verbena bonariensis			2L	Full pot	4	222
<b>TOTAL</b>							<b>9443</b>

Rev. Date Note

Project name: Dunshaughlin East SHD Project number: 17-003

Drawing name: Planting Plan 4 of 4 Drawing number: PP-04-PP

Drawing scale @ A1: 1:500 Drawn by: ad Checked by: ld

Status: Planning date: 14.12.2018

Contact details: Linda Doyle (Director) Tel: 016087782 e-mail: linda@doyle-otroithigh.com

Office address: Pembroke House, 28-32 Upper Pembroke St., Dublin 2.

doyle + otroithigh landscape - architecture

www.doyle-otroithigh.com